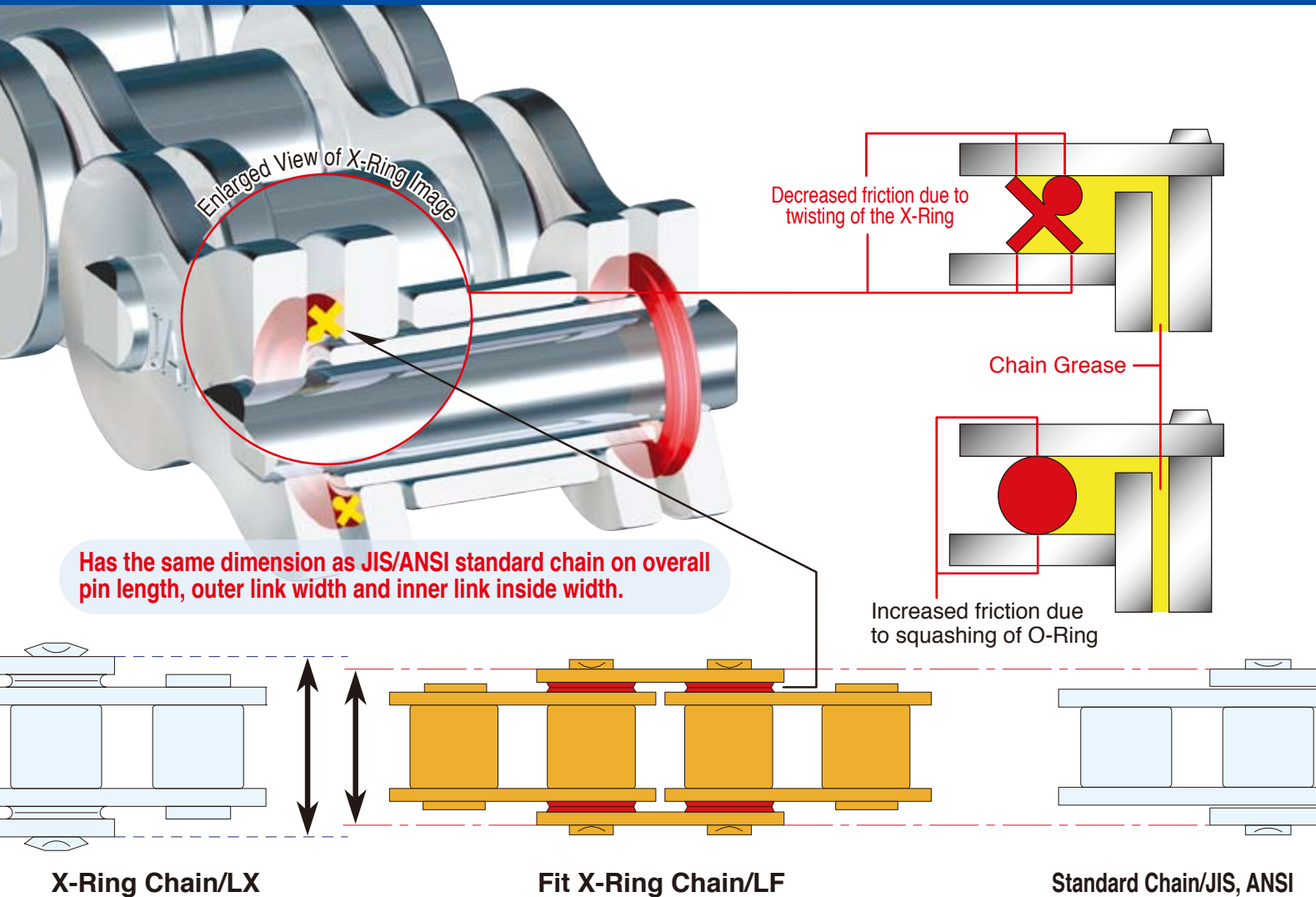




D.I.D Fit X-Ring Chain

Ultimate Life Chain Series

[DID 40LF,50LF,60LF]



Proudly Introducing New Fit X-Ring Chain

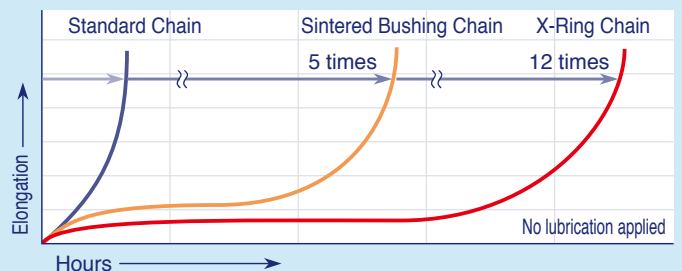
JIS/ANSI standard guide rail and commercially available chain cover can be used without modification.

● THE GREATEST WEAR LIFE

Patented X-Ring's outstanding grease sealing performance doubles the wear life of conventional sintered bushing chain.

● THE GREATEST COST SAVING CHAIN EVER

Increased savings in operational and maintenance costs by increasing the chain life



D.I.D Fit X-Ring Chain/LF



Feature

- Strength** : Equivalent to existing X-Ring Chain/LX.
- Attachment** : Can be designed using the same dimensions as JIS/ANSI standard.
- Surface Treatment** : Can be Nickel Plated.
- Sprocket** : Can be used on JIS/ANSI sprocket.
- Connecting Link** : Interference fit is recommended / Clearance fit optional.
- Offset Link** : 2 Pitch style only.
- Caution** : Do not use in application where solvents or other substances may attack the X-Ring seal made of "Nitric Rubber".

Chain No. and Dimension

Chain

| Chain No. | Pitch P | Inner Link Inside Width W1 | Inner Link Overall Width W2 | Outer Link Overall Width W3 | Roller dia. D | Pin | | | | | | Plate | | | Avg. tensile strength kN | Max. allowable load kN | Approx. weight (kg/m) |
|-----------------|------------|----------------------------------|-----------------------------------|-----------------------------------|---------------------|------|------|------|------|------|-------|-------|------|------|--------------------------------|------------------------------|-----------------------------|
| | | | | | | d | E | F | f | L | I | T | H | h | | | |
| DID 40LF | 12.70 | 7.95 | 10.65 | 14.45 | 7.9 | 3.97 | 16.5 | 17.6 | 9.5 | 16.8 | 9.52 | 1.25 | 12.0 | 10.4 | 18.1 | 3.72 | 0.58 |
| DID 50LF | 15.875 | 9.53 | 12.80 | 18.15 | 10.16 | 5.09 | 20.3 | 21.9 | 11.6 | 21.0 | 11.91 | 1.50 | 15.0 | 13.0 | 30.1 | 6.86 | 0.92 |
| DID 60LF | 19.05 | 12.70 | 16.55 | 22.90 | 11.91 | 5.96 | 25.4 | 26.9 | 14.3 | 25.7 | 14.27 | 1.80 | 18.1 | 15.6 | 42.8 | 9.31 | 1.37 |

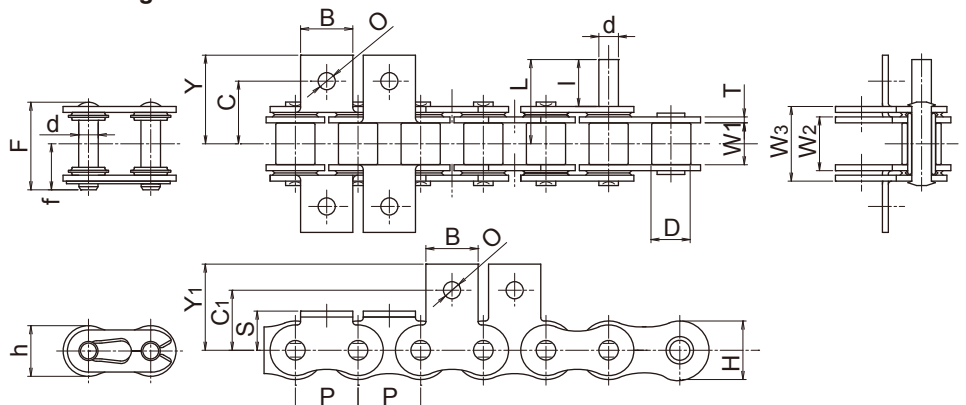
Average tensile strength and maximum allowable load shown above is calculated from main chain body.
The strength of the chain with connecting link and/or attachment will be lower.

Standard Attachment

| Chain No. | A, K | | | | |
|-----------------|------|-------|-------|-------|-----|
| | Y | C | S | B | O |
| DID 40LF | 17.6 | 12.70 | 7.92 | 9.53 | 3.5 |
| DID 50LF | 23.0 | 15.88 | 10.31 | 12.70 | 5.2 |
| DID 60LF | 27.0 | 19.05 | 11.91 | 15.88 | 5.2 |

| Chain No. | SA, SK | | | |
|-----------------|--------|-------|-------|-----|
| | Y1 | C1 | B | O |
| DID 40LF | 17.5 | 12.70 | 9.53 | 3.5 |
| DID 50LF | 22.6 | 15.88 | 12.70 | 5.2 |
| DID 60LF | 26.2 | 18.26 | 15.88 | 5.2 |

Connecting Link



DAIDO KOGYO CO., LTD.

<http://www.did-daido.co.jp>

Sales & Marketing:

D.I.D CO., LTD.

Head Office (Tokyo Office)

3-5-4 Ningyo-cho, Nihombashi Chuo-ku Tokyo 103-0013, Japan

Phone +81-3-3808-0785 Fax +81-3-5695-7146

Osaka Office

2-12-12 Minami-semba, Chuo-ku Osaka 542-0081, Japan

Phone +81-6-6251-2027 Fax +81-6-6258-3230

Distributed By :